

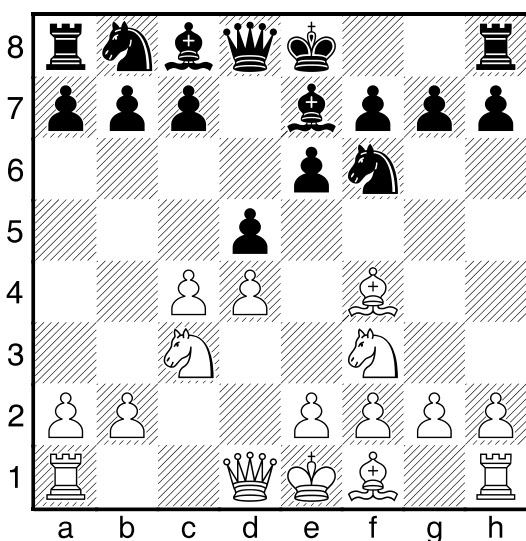
□ Anand, Viswanathan

■ Kramnik, Vladimir

WCC Bonn (4)

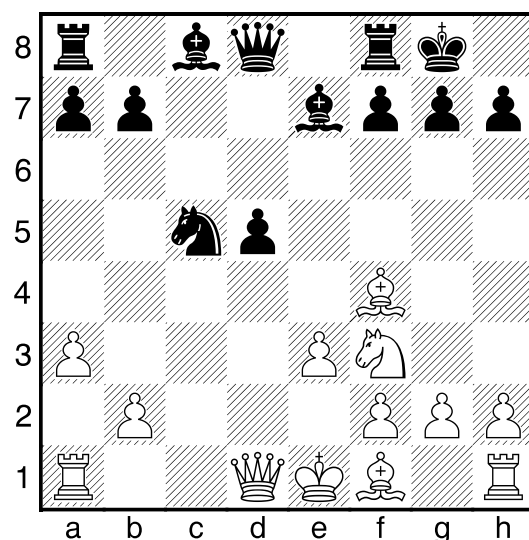
18.10.2008

Some people may say the game was boring: I don't agree. It is possible to find many hidden things behind the curtains and a lot of interesting - and important - psychological questions. In my opinion both players were more or less happy with the draw beforehand. For Kramnik it was obvious, not only he was black but he is inclined to follow one of the golden rules of the Russian school: after losing a game try to make a draw to recover. For Anand every draw now is a step to the title, and it feels good to go to the rest day having consolidated your advantage... Still, one could expect Anand to adopt a much more aggressive attitude, to take advantage of the "momentum" when his opponent may be a bit down. But the opening choice by the Indian was an indication that he wanted today a quiet game... **1.d4** **2.c4** **3.♘f3** Anand is the first to deviate from the second game. Kramnik has played different systems here, including the Queen's Indian and the Semislab but for today's game he chooses the classical Orthodox Queen Gambit Defence, where he also has a good experience. **d5** **4.♗c3** **5.♕f4**



This fashionable move is now more popular among the elite than **5.♕g5**. Not a surprise, since Anand has in his team the young Polish grandmaster Wojtaszek who is supposed to be an expert on this line. **0-0** **6.e3** **♗bd7**

[**6...c5** was for many years the main choice here. Kramnik lost with it to Leko in Brissago while Anand had some experience in this line with both colors, including a game with Kramnik: **7.dc5** **♕c5** **8.a3** **♘c6** **9.♖c2** (**9.cd5** **♗d5** **10.♗d5** **ed5** **11.♕d3** Karpov, A (2687)-Anand, V (2755)/Moscow 2002/draw in 114 moves **♕b6** **12.0-0** **♕g4** **13.h3** **♕h5** **14.b4** **♖e8** **15.♖c1** **a6** **16.♕a6** **♖a6** **17.b5** **♖a3** **18.bc6** **bc6** **19.♖c6** Leko, P (2741)-Kramnik, V (2770)/Brissago 2004/1-0 in 69 moves) **9...♖a5** **10.0-0-0** **♕e7** **11.g4** Anand, V (2752)-Kramnik, V (2809)/Leon 2002/draw in 48 moves] **7.a3** A very solid choice which shows that Anand didn't want to take any risk before the rest day. Kramnik was doing fine against other moves: [**7.h3** **c5** **8.cd5** **♗d5** **9.♗d5** **ed5** **10.♕e2** **c4** **11.0-0** **b5** **Piket, J (2633)-Kramnik, V (2758)/Monte Carlo 2000/ 0-1** in 41 moves; **7.♖c2** **c5** **8.dc5** **♗c5** **9.0-0-0** **♖a5** **10.♔b1** **♕d7** **Pelletier, Y (2479)-Kramnik, V (2760)/Zuerich 1999/ draw** in 47 moves; The main theoretical discussion now goes **7.c5** **c6** **8.h3** **b6** **9.b4** **a5** **10.a3** **♕a6** and black is doing well so far] **7...c5** **8.cd5** **♗d5** **9.♗d5** **ed5** **10.dc5** **♗c5** We reach a classical isolated pawn position which actual theory considers to be perfectly ok for black.

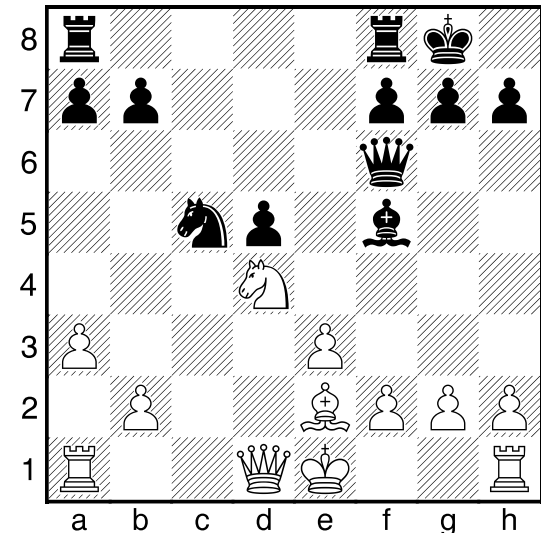


11.♕e5 The main move: on the long diagonal the bishop reinforces the control over critical squares like d4 and b2. **♕f5!** After some thought Kramnik improves on a previous game which he played with Kasparov. Most probably this was a surprise for Anand, since after this

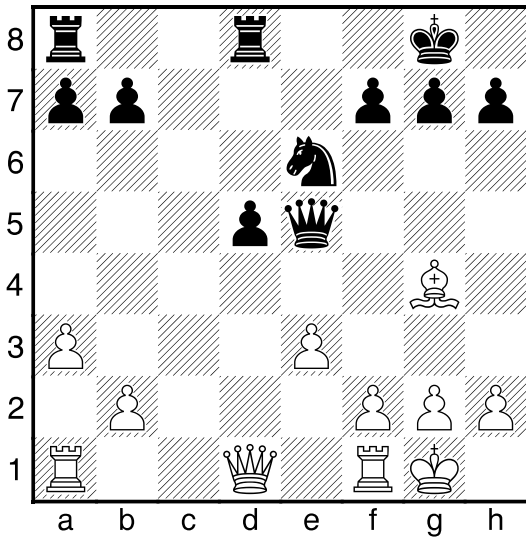
move he started to think more than his opponent.

[The main line considers to be 11...♔f6 I am still curious to know what Anand could have possibly prepared there, since the position is very dry and so far black is doing well there. Here are some relevant examples: 12.♔f6 (A game of one of the members of Anand team versus.. myself! 12.♔e2 ♔e5 13.♘e5 ♔e6 14.♘f3 ♖b6 15.b4 ♘e4 16.♗d4 ♜fc8 17.♔d3 ♗d4 18.♘d4 ½-½ Wojtaszek,R (2630)-Illescas Cordoba,M (2620)/Pamplona 2006) 12...♗f6 13.♗d4 ♗d4 (One fresh game at high level: 13...♗d6 14.♞d1 ♞d8 15.b4 ♘e6 16.♗b2 a5 17.♔d3 ab4 18.ab4 ♔d7 19.0-0 ½-½ Khenkin,I (2655)-Berkes,F (2645)/Subotica 2008) 14.♘d4 ♔d7 Kramnik didn't have problems to hold the draw in this slightly worst endgame. 15.f3 ♜fc8 16.♙d2 ♘e6 17.♔d3 ♘d4 18.ed4 f6 19.h4 g6 20.♞ac1 ♙f7 21.♞c5 b6 22.♞c8 ♞c8 23.h5 ♙g7 24.f4 ♔f5 ½-½ Kasparov,G (2838)-Kramnik,V (2802)/Moscow 2001] 12.♔e2 ♔f6! After the inclusion of ♔e2 and ♔f5 white has less options. Kramnik's move looks the more natural to get full equality. [Another member of Anand's team didn't manage to win this position despite he got a slight advantage: 12...♞c8 13.0-0 ♔e4 14.♞c1 a6 15.b4 ♘e6 16.♗b3 ½-½ Nielsen,P (2642)-Matros,A (2455)/FIDE.com 2002/ draw in 65 moves; At very top level we have a recent game which also ended in a draw, still black was suffering a little bit: 12...♔e4 13.0-0 ♘e6 14.♘d4 ♗b6 15.♗d2 ♞ac8 16.♞ac1 h6 17.♔g4 ♞c1 18.♞c1 ♘c5 19.♔e2 a5 20.f3 ♔g6 21.b4 ab4 22.♗b4 ♗b4 23.ab4 ♘d3 24.♔d3 ♔d3 25.♞c7 ♔b4 26.♞b7 Sokolov,I (2666)-Topalov,V (2769)/Villarrobledo 2007/ draw in 51 moves] 13.♔f6 [White managed to win with 13.0-0 but black could have easily improved with ♔e5! (instead of 13...♔e4 14.♔f6 ♗f6 15.♗d4 ♗d6 16.♘d2 ♜fd8 17.♘e4 de4 18.♗d6 ♞d6 19.♜fd1 ♞ad8 20.♞d6 ♞d6 21.♞c1 b6 22.b4 ♘e6 23.♙f1 and white managed to squeeze his minimal advantage in Tregubov,P (2636)-Goloshchapov,A (2563)/Muelheim 2008/ / 1-0 in 60 moves) 14.♘e5 ♞c8 15.♞c1 ♗f6 and black is ok] 13...♗f6 14.♘d4 The alternatives doesn't seem very promising. [After 14.♗d4 ♗d6 15.♘d2 ♞ac8

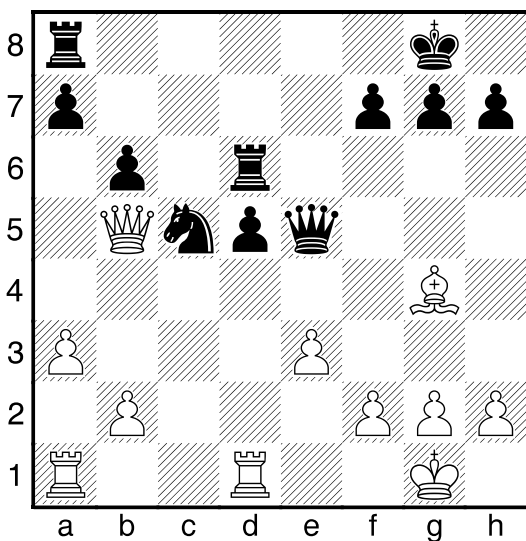
black improves on the game by Topalov since he didn't play ♔e4; And if 14.♗d5 ♗b2 15.0-0 ♞ac8 16.♗f5 ♗e2 the game is drawish]



14...♘e6?! In my opinion black is too much in a hurry to equalise. There was no need to give the bishop. It's well known that the worst of bishops may be better than the best of knights! [The natural 14...♔e4 had been played. After 15.0-0 (One game went 15.♞c1 ♘e6 16.f3 ♔g6 and black is not worst; Flumbort,A (2499)-Goloshchapov,A (2563)/Baden Baden 2007/ draw in 21 moves) black can play 15...♘e6 16.♞c1 ♞ac8 17.♗d2 ♘d4 18.♗d4 ♗d4 19.ed4 reaching an endgame similar to Kasparov-Kramnik which we already saw before. White's advantage maybe microscopical.] 15.♘f5 ♗f5 16.0-0 Now white's game is a bit more pleasant to play. ♜fd8?! Again Kramnik played very fast. This move allows white to set up some pressure on the queen side. [Why not 16...♗e5 with a direct attack on b2? After 17.♗b3 it may follow d4 and if 18.♗b7 de3 seems good for black.] 17.♔g4! ♗e5 [Seirawan suggested 17...♗f6!? His idea was that after 18.♗b3 ♘c5 19.♗b5 b6 black is ready to break on d4. It maybe almost equal but still I prefer white after 20.♞ad1!? d4 21.b4 with some initiative] 18.♗b3! White's pieces are reaching a good coordination, with combined pressure on b7 and d5. ♘c5 [After the game Anand suggested 18...d4 but it's not so clear that black gets full equality after 19.♗b7 de3



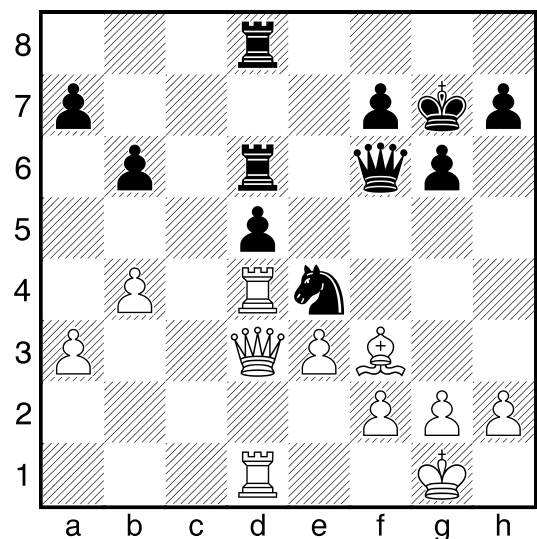
(the computer recommends 19...d3!? but it looks very risky for black) 20.fe3 ♔e3 21.♖h1 and white is definitively slightly better. ; Maybe the bold 18...b6!? was not so bad. After 19.♖ac1 (if 19.♖fd1 ♖ac8 black fights for the open line.) 19...d4 20.♗e6 ♔e6 21.♔e6 fe6 22.ed4 ♖d4 black has a little worst endgame that however should be a draw.] 19.♔b5 b6 Kramnik looked a bit worried here. [It was bad for black 19...d4? 20.b4 ; After 19...♗e4 white doesn't hurry to take on b7 and may play simply 20.♖fd1 with somehow better chances] 20.♖fd1 ♖d6



21.♖d4?! Clearly not the best, white will loose coordination after this move. [At the press conference I asked the players for their evaluation after 21.♖ac1! white wants to play b4, cleaning the c line and keeping control of

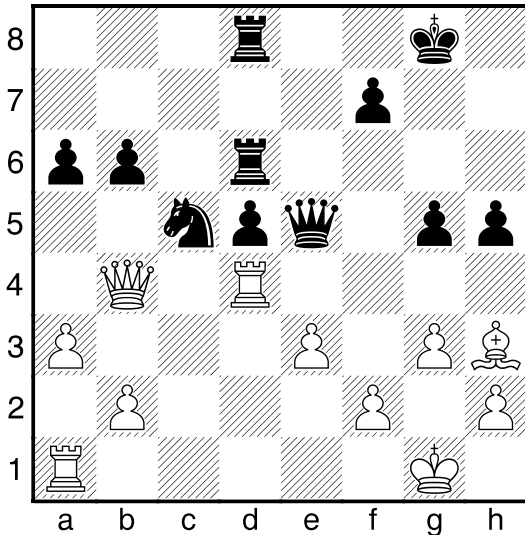
the game. It may follow ♖ad8 (The point is that after 21...a6 white can play 22.♔e2 ; And if 21...h5 22.♗f3 ♖ad8 23.b4 ;or 21...f5 22.♗f3 ♖ad8 23.g3 ♗e4 24.♗g2 white keeps a slight but comfortable advantage.) 22.b4 ♗e4 (After 22...♗e6?! 23.♗e6 ♔e6 black is in big risk to loose the isolated pawn when white triples on the d line.) 23.♖d4 Kramnik said that after g6 black's position is solid enough to hold the draw. Maybe true, but white has a nice position to play, pressing black with no risk at all. For example 24.♔d3 (24.a4!? ; 24.♗d1?! ♔f6! 25.f3 ♗g5 26.♗b3 ♗e6) 24...♔f6 25.♗f3 ♔g7 26.♖d1 .

----- analysis board -----

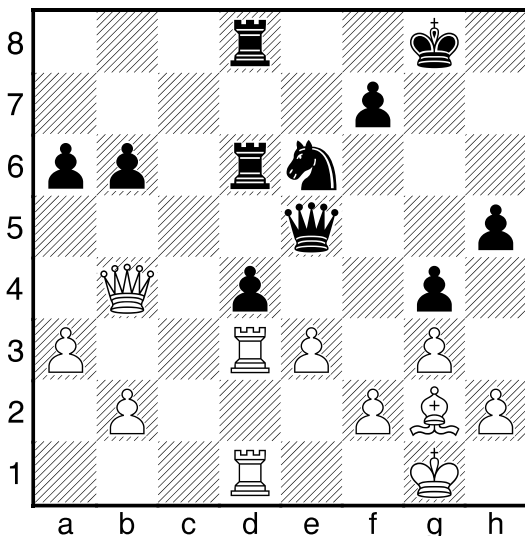


and I am sure any player would rather play white here. ; The move 21.b4? needs preparation because the answer ♗e4 is very annoying.] 21...a6! Vladimir seizes inmediately the oportunitie to disrupt white's coordination. The queen can't go to e2 because the fork on b3. 22.♔b4 After h5! Now that white doesn't have b4 anymore black starts to move the king side, remarking his good centralized pieces. 23.♗h3?! A strange decission. Anand wants to keep control on e6 but it will not last long. Maybe he underestimated black's g5. [After 23.♗f3 ♗e6 24.♖d3 ♖ad8 25.♖ad1 d4 black equalises; It was interesting 23.♗e2!? to target the a6 pawn. After ♖ad8 24.♖ad1 black may play g6 (since 24...♗e6 25.♖4d2 d4 26.♗a6

looks dubious.) After 25.h3 ♔g7 black position is solid and it's not easy to find a way for white to increase the pressure.] 23...♖ad8 24.g3 g5! Excellent understandig by Vladimir Kramnik.



25.♖ad1 g4 26.♙g2 [Computer likes 26.♙f1 but if you go ahead with the natural moves ♗e6 27.♖4d2 d4 28.♙a6 ♗g5 29.♙b7 ♗h3 30.♔g2 ♖e7 it understands that things are not so brilliant for white.] 26...♗e6 Kramnik was visibly recovered at this point. 27.♖4d3 d4



28.ed4 ♖d4 After this move Anand's face showed some relief [If he would not have lost the previous game I bet Kramnik would have tried 28...♗d4! which is probably not enough to claim any advantage but makes life much more difficult for white. At the press

conference Kramnik pointed that white could continue with A) In fact only 29.♖e1 seems good enough to be taken into consideration, with the idea of doubling on the e line. After ♖f6 (Of course not 29...♗e2? 30.♖e2 ♖e2 31.♖d6) white has to choose: 30.♖c3!? (if 30.♖c3 a5! 31.♖c4 ♗e6 32.♖f1 ♖d2 33.♖c2 white holds but is pressing. ; Clearly would be a blunder 30.♖de3?? ♗c2) 30...♔g7 31.♖de3 ♗e6 32.♖f6 ♔f6 and despite being equal it's still nicer to play this endgame with black.; B) An entertaining example of the dangers for white, just for fun: 29.♔f1? ♖e2 30.♔g1 a5 31.♖a4 ♗f3 32.♙f3 g4 33.♖d6 ♖d6 34.♖f1 b5 35.♖b3 ♖d3 36.♖b5 ♖f1 37.♔f1 ♖d1#; C) 29.♔h1 and he could not find a way to improve his chances. Under the threat of ♗f3 there were not so many alternatives: Kramnik pointed that he saw h4! C1) Ugly but better is 30.h3 a5 31.♖c4 gh3 32.♙h3 hg3 33.♖g3 ♔f8 equal but easier to play with black.; C2) The best would be probably 30.♖e3! when black can still try ♖b5 (worst is 30...♖g5?! 31.♖e8) and after 31.♖b5 ♗b5 32.♖d6 ♖d6 the game is around equal but again, black's play is easier; C3) and after 30.g4? he thought he could not play ♗f3! because 31.♖g4 takes with check. But in fact after ♔f8 black is winning an exchange: 32.♙f3 (the point is that after 32.♖f3?? ♖d3 33.♖d3 ♖e1 white gets mated) 32...♖d3 33.♖d3 ♖d3 with a serious black advantage.] 29.♖d4 ♖d4 Offering a draw which was immediately accepted by Anand. [29...♖d4 30.♖d4 ♗d4 (30...♖d4 31.♖d4 ♗d4 32.♙b7 a5 33.f3 ♔g7 34.♔f2) 31.♖b6 ♖e1 32.♙f1 ♗f3 33.♔g2 ♖e4 34.♖a6 ♗e1 35.♔g1 ♗f3 36.♔h1 ♗e1] 1/2-1/2